

Memorial Certificate

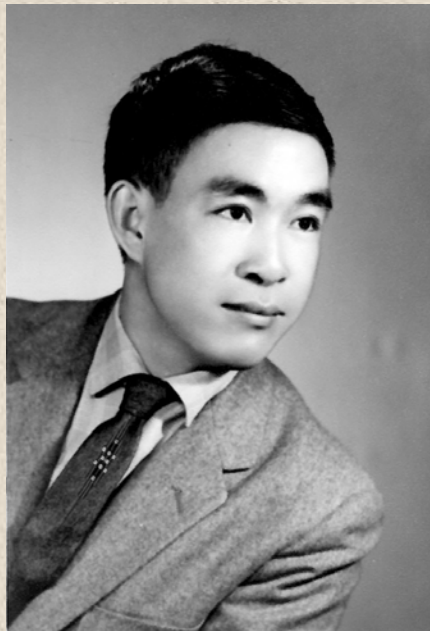
*San Diego
Burial at Sea*

The ashes of Buck Ying Lee were scattered this day, Jan. 30, 2016 @ 1:00 p.m. into the Pacific Ocean off the coast of San Diego, CA

Latitude: 32.40.10° N

Longitude: -117 12.30° W

Depth: 24 feet



*My days on earth have
passed, and having
placed aside the
bonds of the
physical now dwell
in the eternal spirit.*

*Ashes to ashes
and dust to dust.*

Remember me fondly